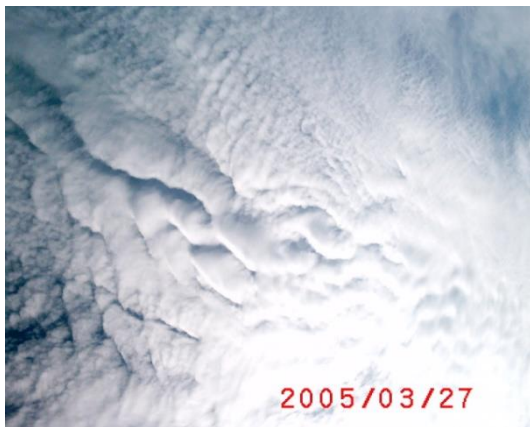


## Orgone alchemy - Georg Ritschl - nieuwsbrief 12-05-2018.

Many people have asked us what happens with the chemtrails when they seem to be dissolving under the influence of positive orgone energy. There are even fears that perhaps when they dissolve in the sky, more fallout on the ground might be the result. **So what's really happening?** We can only speculate because we have no access to sophisticated meteorological equipment. We rely on the 3 faculties of

1. observation
2. reasoning
3. intuition (and then reasoning again)

When we introduce massively positive orgone energy into an area that has been under heavy chemtrail attack, we often see the chemcrud dissolve within minutes. The process is silent, not accompanied by hefty winds and nobody has ever complained about any detectable fallout. The pictures below show a typical sequence of chemtrails being dissolved by Orgone energy. it was taken in the coastal town of George, Western Cape, South Africa. The sequence happened within 30 minutes after and while we were gifting approximately 15 cellphone towers with less than 30 small tower busters "Dirty Harry". That's how powerful orgonite is:



In advanced theoretical physics it has been held that energy is matter and matter is energy. We've all seen Albert Einstein's famous formula  $E = m c^2$ . Or are both expressions of something even more

fundamental that underlies our physical reality? A lot of very intelligent people have been speculating in this direction. All older civilisations had the concept of an ether, fluidum, quantum fluctuation, pranic field. The old experiential science of alchemy was dealing with transmutations of base metals into gold but also with the refinement of human consciousness. Were the alchemists just delusional or did they know something we have just plainly forgotten? In the 1960s the 2 scientists Pons and Fleischman discovered the phenomenon of "cold fusion" to grand furore. I was a school kid then, but can actually remember the hubub in the press. It was hailed as the end of all our energy worries and then quickly buried like so many breakthrough findings and inventions. One of the usual scientific tragedies. *For an overview of some of the greatest scientific breakthroughs of the last 200 years that were suppressed, I can highly recommend the book "Lost Science" by Gerry Vassilatos.* But people kept replicating the experiments and enlarging on them, so now there is a growing body of knowledge on "LENR" or Low Energy Nuclear Reactions. The European Union even included LENR in their **2012 White Book on future energy sources.**

What happens in LENR is atomic reactions at room temperature in a water glass. (with a few extra elements such as deuterium to trigger it). Isn't that alchemy? The TRANSMUTATION of one element to another. Living organisms do transmutation of elements all the time. Two Russian scientists have recently patented bacteria that can digest copper and crap out gold. Wilhelm Reich has demonstrated how living organisms are formed out of pulsating life energy bubbles that he called bions. All this happened under sterile conditions. According to the very attractive "expanding earth theory" the earth grows 2 cm a year in diameter by taking in densified cosmic energy. The theory matches with Wilhelm Reich's theory of the forming of galaxies, solar systems and planets as materialisation of densifying orgone energy which moves in spiral vortices.

Just put all these seemingly disparate findings together and tell me you can't imagine how the intelligent pulsating life energy that is everything there is cannot take some toxic molecules and transmute them into harmless water vapour. A few days ago one of our customers who also makes beautiful orgonite and very creative fashion items emailed me with some interesting news: She had taken rain water samples at her thoroughly organised place and compared them with samples from a friend's place where no orgonite was deployed. The samples were analysed in a professional laboratory with the following result:

#### **Echo Park (Orgone Zone)**

Aluminum 42.6 ug Barium 23.6 ug Strontium 30.8 ug.

#### **Arleta (No Devices)**

Aluminum 1810 ug Barium 73.5 ug Strontium 177 ug.

I think it speaks for itself

| Project: GENERAL TESTING GeoEngineering Watch Los Angeles                                     |   |         |             |      |      |           |          |          |         |
|---|---|---------|-------------|------|------|-----------|----------|----------|---------|
| Metals - Total  |   |         |             |      |      |           |          |          |         |
| Analyte   | Units   | Results | Qualifier   | MDL  | RL   | Method    | Analyzed | Prepared | Batch   |
| <b>ECHO PARK, CA - Grab Water (18D0278-01) Sampled:03/27/18 12:00 Received:04/05/18 10:26</b> |   |         |             |      |      |           |          |          |         |
| Aluminum  | ug/l  | 42.6    | QM-05       | 1.5  | 5.0  | EPA 200.8 | 04/16/18 | 04/13/18 | B8D0979 |
| Barium  | "   | 23.6    |             | 0.1  | 0.5  | "         | "        | "        | "       |
| Strontium   | "   | 30.8    |             | 0.1  | 0.5  | "         | "        | "        | "       |
| <b>ARLETA, CA - Grab Water (18D0278-02) Sampled:04/03/18 12:00 Received:04/05/18 10:26</b>    |   |         |             |      |      |           |          |          |         |
| Aluminum  | ug/l  | 1810    | QM-05, R-08 | 75.0 | 250  | EPA 200.8 | 04/16/18 | 04/13/18 | B8D0979 |
| Barium  | "   | 73.5    | R-08        | 5.0  | 25.0 | "         | "        | "        | "       |
| Strontium   | "   | 177     | R-08        | 5.0  | 25.0 | "         | "        | "        | "       |
| Notes and Definitions   |   |         |             |      |      |           |          |          |         |
| R-08  | The sample was diluted due to sample matrix resulting in elevated reporting limits.   |         |             |      |      |           |          |          |         |
| QM-05   | The spike recovery was outside acceptance limits for the MS and/or MSD due to matrix interference. The LCS and/or LCSD were within acceptance limits showing that the laboratory is in control and the data is acceptable.  |         |             |      |      |           |          |          |         |
| DET   | Analyte DETECTED  |         |             |      |      |           |          |          |         |
| ND  | Analyte NOT DETECTED at or above the detection limit  |         |             |      |      |           |          |          |         |
| NR  | Not Reported  |         |             |      |      |           |          |          |         |
| dry   | Sample results reported on a dry weight basis   |         |             |      |      |           |          |          |         |
| RPD   | Relative Percent Difference   |         |             |      |      |           |          |          |         |
| <   | Less than reporting limit   |         |             |      |      |           |          |          |         |
| ≤   | Less than or equal to reporting limit   |         |             |      |      |           |          |          |         |
| >   | Greater than reporting limit  |         |             |      |      |           |          |          |         |
| ≥   | Greater than or equal to reporting limit  |         |             |      |      |           |          |          |         |
| MDL   | Method Detection Limit  |         |             |      |      |           |          |          |         |
| RL/ML   | Minimum Level of Quantitation   |         |             |      |      |           |          |          |         |
| MCL/AL  | Maximum Contaminant Level/Action Level  |         |             |      |      |           |          |          |         |
| mg/kg   | Results reported as wet weight  |         |             |      |      |           |          |          |         |
| TTL   | Total Threshold Limit Concentration   |         |             |      |      |           |          |          |         |
| STLC  | Soluble Threshold Limit Concentration   |         |             |      |      |           |          |          |         |
| TCLP  | Toxicity Characteristic Leachate Procedure  |         |             |      |      |           |          |          |         |
| Note 1  | Received Temperature - according to EPA guidelines, samples for most chemistry methods should be held at ≤6 degrees C after collection, including during transportation, unless the time from sampling to delivery is <2 hours. Regulating agencies may invalidate results if temperature requirements are not met. |         |             |      |      |           |          |          |         |
| Note 2  | According to 40 CFR Part 136 Table II, the following tests should be analyzed in the field within 15 minutes of sampling: pH, chlorine, dissolved oxygen, and sulfite.  |         |             |      |      |           |          |          |         |

[Link to WuWu-Woman's original blog](#)